



The  
Priority  
Center

Ending the Generational  
Cycle of Trauma



# Impact Report

## 2021-2022

[theprioritycenter.org](https://theprioritycenter.org)



# The Priority Center

Ending the Generational Cycle of Trauma

## Dear friends of The Priority Center,

For nearly four decades, The Priority Center has had an incredible story to tell about the prevention and intervention of child abuse, and the advocacy and strengthening of families in Orange County.

"Kindness to children, love to children, goodness to children—these are the only investments that never fail."

– Henry David Thoreau

As we reached deep and far to impact Orange County's neediest clients who often are voiceless, we focused our efforts on the escalated needs from the pandemic: social isolation, poverty, depression, lack of resources, suicidal ideation, and loss of hope. The Priority Center shined with beacons of hope for the more than 8,400 total clients served this past year, up from 6,837 served during the previous fiscal year. A hope brought by our stellar staff and incredible board of directors, raising the awareness of the work The Priority Center does in our community. As the need is at an all-time high, so is the importance – and need – of additional financial support to continue this essential work.

The Priority Center remains a trusted leader, partner, and collaborator in turning around this unnecessary suffering through primary prevention. Our efforts are to strengthen individuals and vulnerable families into healthy, strong communities. The amazing work of The Priority Center and the impact it has on the local community inspires us to be involved and to be part of an organization that provides opportunities for families and children to better their lives. We offer programs and create an environment where families and children can thrive.

Warmest Regards,



Lisa Fujimoto  
*Executive Director & CEO*



Roger Armstrong  
*2021-2022 Chair*







**Our mission** is to deliver **life-changing programs** to **assist people in crisis** by giving them the tools and **support** necessary to **end the generational cycle of trauma**—including prevention of child abuse and neglect, through **early intervention** and **mental health services** and **advocacy**.

## Table of Contents

Programs & Services .....4	Financials .....18
<i>Intervention</i> .....4	Community Engagement ...20
<i>Prevention</i> .....7	Donors .....22
<i>Advocacy</i> .....10	Partnerships .....26
Fundraising Events .....12	Board of Directors .....27
By the Numbers .....16	

# Programs and Services

The Priority Center's unique programs address the specific needs of the families we serve to ensure that children live in violence-free homes. Unfortunately, the effects of the COVID-19 pandemic still linger, and along with rampant inflation, many children and families in our community are facing more challenges than ever. Despite the many challenges of the past year, The Priority Center's programs continued providing crucial support to families with the greatest needs. We continued achieving program goals by directly serving those in need, engaging individuals through impactful work, and educating families. All services provided through The Priority Center's nine life-changing programs continue at no cost, serving diverse, at-risk populations.

## Intervention

Through four intervention programs, The Priority Center provides necessary support and services to families and individuals in times of crisis.

### **Child Abuse Services Team (CAST)**

Through a multi-disciplinary collaboration of private and public agencies, The Priority Center serves children who are either victims of abuse or have witnessed a violent crime. In CAST's safe and secure environment, our volunteer Child Advocates provide children with the necessary comfort and therapeutic support during the crucial and challenging multi-interview and medical examination processes.





### **Children's In-Home Crisis Stabilization**

The Children's In-Home Crisis Stabilization program serves children through age 18 experiencing a mental health crisis who are referred by a collaborative partner or by a member in the community. The Priority Center offers field-based crisis support through a three-week program that includes short-term in-home therapy and case management, focusing on maintaining family stabilization and preventing hospitalization. Through this approach, we can intervene in a crisis before the situation escalates to out-of-home placement.

*Our program received a referral for a 15-year-old teenage boy presenting defiant and aggressive behavior towards his mother, poor communication, relational problems with peers, and destruction of property. In addition, the mother was a single parent and had cognitive delays due to a long history of substance use.*

*Together, the family and the treatment team focused on improving communication skills between both mother and son, provided education to the mother regarding basic parenting skills and provided the parent with her own resources to seek treatment and support for her individual struggles.*

*During treatment, the teen shared that he appreciated the time his mother participated in his treatment. As a result, their relationship significantly improved, and the confrontational behaviors decreased dramatically. The mother was grateful for the tools and skills she had learned, and felt confident to continue implementing these new strategies even after our services had ended. Our team also communicated and coordinated with a long-term therapist to promote even more success in the long run.*



### **Adult In-Home Crisis Stabilization**

Adults experiencing a mental health crisis may also receive therapeutic stabilization services through The Priority Center's three-week Adult In-Home Crisis Stabilization program. Using a field-based approach and a treatment team consisting of a therapist, case manager, and peer mentor, the program helps to diffuse the crisis and assist adults in finding a healthy and supportive lifestyle. In addition to crisis stabilization, the program aids the individual to connect them to appropriate resources, with the ultimate goal of long-term stabilization.

### **Basic Needs**

The Basic Needs program provides more than 100 at-risk families with essential goods and household items per month. Through Orange County Healthcare contracts and private in-kind donations, The Priority Center provides families everyday essentials, including food, diapers, furniture, car seats, cribs, and beds. This program assists families at risk of separation in Orange, Riverside, San Bernardino, Los Angeles, and San Diego counties.

*A young couple was experiencing economic hardship due to pandemic-related loss of employment. The struggling mother of two worked hard to help provide for her children, but the continued unemployment made things extremely challenging. With only the woman's fiancé working, their lower income made it nearly impossible to purchase the essentials for their children after paying the rent.*

*Thanks to the Basic Needs Program, the family received assistance in getting clothing, hygiene products, and sheets and towels. Lastly, The Priority Center provided linkages to services that helped the family financially until their employment was stabilized.*



# Prevention

The Priority Center's prevention programs educate and advise children and families in need. This assistance helps minimize the likelihood of crisis intervention in the future and builds healthy habits within the client's home.

## Infant and Toddler In-Home Visitation

The Priority Center works with high-risk families to strengthen bonding, promote positive behavior, and improve relationships within the family unit. The Priority Center refers families through partner agencies and organizations utilizing a hands-on approach to bolster their family life.

*Finding it difficult to meet the needs of her three-year-old child on her own, Maria joined the Infant/Toddler program. The loss of Maria's father left a teenage sibling in Maria's care as well, and the single mother found it even more difficult to pay her bills and put food on the table.*

*Maria's caseworker was able to provide her with linkages to food banks, CalFresh, rental assistance, and utility assistance. These connections allowed Maria to catch up on rent and bills, and to put food on her family's table. Maria's caseworker helped her acquire parenting skills that left Maria more loving, firm, and consistent with her children. Maria now enjoys a much stronger bond with her children.*





### CalWORKs Home Visiting Program

Through The Priority Center's partnership with CalWORKs, we provide monthly home visits for 24 months, approved by the Orange County Social Services Agency. The program aims to support at-risk families with positive health, development, and well-being outcomes for pregnant and parenting individuals, families, and infants born into poverty.

### School Readiness

The School Readiness Program helps families of young children with the transition to school. Over 12 weeks, we educate parents on developmental milestones and healthy growth and development signs. In addition, the program celebrates learning and education by mentoring parents to become teachers in their own homes.

*The Priority Center's Infant and Toddler Program referred a four-year-old boy to School Readiness after the child's mother had expressed interest in tracking his speech development. The child, who only had about 10 words and displayed difficulty in forming sentences, was also displaying outwardly aggressive behavior towards others and signs of self-harm.*

*After initial assessments demonstrated concern with the patient's development according to age range, mental health workers referred the mother and child to CalOptima Behavior Health Line for further evaluations.*

*As a result, the child was diagnosed with moderate Autism, and the mother received education under the Triple P (Positive Parenting Program) framework in order to implement positive parenting techniques.*

*The mother was grateful to learn techniques to promote her son's development further and gain greater parenting skills. Upon being diagnosed with Autism, the child began receiving ABA therapy.*





## Outreach and Engagement

The Priority Center's Outreach and Engagement Program hosted educational and skill-building presentations. Topics presented included growth and development, bullying, anger and stress management, healthy communities, healthy relationships, and overall support for social and emotional health.

*The Outreach and Engagement program often collaborated with other like-minded organizations to increase its impact.*

*For example, Angels Youth Clinic was a great collaboration where The Priority Center's O&E program took the lead in organizing activities and providing promotional items. O&E also worked with collaborators Orange County Asian Pacific Islander Community Alliance (OCAPICA), Western Youth, and The Phoenix House to provide stress management and coping workshops to the 150+ youth of multiple ethnicities and backgrounds that were in attendance. The attendees ranged from 8-12 years of age, with 81% male.*

*While the workshops were well-attended, many attendees also enjoyed the group activities, proving the event to be a great way to introduce mental health in a less stigmatizing, fun way!*



# Advocacy

Through The Priority Center's advocacy program, families gain the resources they need to continue on their journey successfully.

## Connected Care

The Connected Care Program complements and continues The Priority Center's short-term intervention/crisis programs. Serving as an aftercare program, The Priority Center provides ongoing supportive services, for no fee, to recently exited adult clients of our three-week crisis program. By continuing to support clients with resources and education, Connected Care aims to help them break the cycle of crisis and trauma – preventing the client from re-entering the crisis programs again. This program is 100% privately funded by the community through corporate, foundation, and individual donations.

*Jane came to Connected Care through our Adult In-Home Crisis Stabilization team. She had been struggling with her mental health for a long time and was having suicidal thoughts.*

*Jane had been abusing her prescription medications for almost 10 years. Having suffered a brain injury, Jane had been struggling with memory loss and disorientation making it challenging for her to function normally, even with the most minor tasks around her house.*

*Connected Care helped to facilitate and assist with basic tasks. Jane now has a neurologist, is sober, and is in the process of finding new housing. Our next mission is to find her a caretaker to assist with her daily life.*

*"I felt like I could no longer do this alone and I'm so grateful for such caring people. I don't know where I would be without this program."*







## Family Support Events

### Ready, Set, Learn: Back-to-School Drive

Every year, The Priority Center provides over 300 backpacks to the under-served families supported by The Center's programs. We partner with businesses, churches, service groups, and Karina's Backpack Project, to ensure kids start the school year off successfully.

### Families Helping Families

The holiday season can be incredibly challenging for impoverished families. Families Helping Families is The Priority Center's annual "adopt-a-family" program that benefits those supported by our programs. The program finds compassionate donors to fulfill our children's holiday wish lists and provides their parents with gift cards to purchase the family's greatest needs.



# 2021-2022 Fundraising Events

## 2021 Summer Sizzle Pickleball Tournament

On Sunday, July 25th, The Priority Center hosted its inaugural "Summer Sizzle Pickleball Tournament" at The Tennis & Pickleball Club at Newport Beach. It was a day for pickleball enthusiasts and beginners alike, with a beginner's clinic, informal play for those new to the sport, and a competitive tournament for experienced players. We had over 100 guests in attendance and raised more than \$10,000 in support of The Priority Center's programs.



Center: Board Member Marc Reich

Golf Committee Chairs L to R:  
Kaz Mulcahy, Breanna Fernandez, Lucia Svrckova, Rob Buller, Kirk Smith, Evelyn Ramirez-Schultz, Sue Crockett



Pickleball Committee





# 2021 Annual Golf Classic Tournament

We celebrated our 20th Annual Golf Classic Tournament, presented by Wright Ford Young and Co., in November 2021, at the private Dove Canyon Golf Club in Trabuco Canyon. It was a fantastic day on the links, where guests enjoyed the cool crisp Fall air with friends and colleagues. Players enjoyed delicious breakfast burritos donated by Tacos & Co, contests and games, and a shotgun tournament, all in support of The Priority Center's life-changing programs. Raising more than \$83,000 for The Priority Center's programs, we are so grateful for those who helped us hit a hole in one for the children and families we serve.



*Far Left: Board Member Debashis Chowdhury*



*Tablescape Committee L to R:  
Breanna Fernandez, Jennifer Reiss,  
Nicole Madison, Evelyn Ramirez-Schultz,  
Rowena Treitler, Almas Shewa*



## 2022 Women of Priority - TableScapes

The Priority Center's Women of Priority Committee hosted its first in-person event on Friday, May 20th, 2022, at the Inn at the Mission San Juan Capistrano. Tablescapes – An Afternoon of Style & Tabletops, featured an upscale Shopping Boutique, a silent auction, and countless "ooh and ahh" reactions from the elegant tabletop designs. Guests enjoyed beautifully curated Tablescape designs by Karen Tallichet and her partner Laura Lee, who displayed a Spring themed table, Estelle Nguyen, who featured curated items from Paris, France, and Juaneie Munoz, who created a minimal yet elegant spring tablescape. The Inn at the Mission also incorporated the rich history of San Juan Capistrano throughout their Tablescape. It was an incredible afternoon where guests help raised over \$40,000 to benefit our CAST Advocates Program.



*L to R: Susan Carroll,  
Susan Crockett, Suzanne Miller*



# 2022 Annual Gala - A Night in Havana

In April 2022, we hosted our 23rd Annual Gala – A Night in Havana, presented by The Crean Foundation at the Balboa Bay Resort in Newport Beach. Sponsors, supporters, and friends of The Priority Center gathered for a fantastic evening of food, fun, and fundraising for the first time in two years. Guests enjoyed a cocktail hour, silent auction, Cuban-inspired dinner, live auction, and a live performance by Santana lead singer Andy Vargas and his band. In addition, we recognized our Champion of Change Honorees, Jeff Shepard, Alex Musetti, Karina's Backpack Project, and the Croul Family Foundation for their incredible support of The Priority Center's mission. The overwhelming support of our guests resulted in netting more than \$200,000 for children and families in crisis served by The Priority Center's life-changing programs.



*L to R: The Priority Center CEO, Lisa Fujimoto, Champion of Change Awardee, Alex Musetti, Board Member Marc Reich*



*The Priority Center CEO, Lisa Fujimoto, with ABC7 Broadcast Journalist and Master of Ceremonies, Eric Resendiz*



*The Priority Center Board of Directors*

# By the Numbers

The Priority Center, Ending the Generational Cycle of Trauma, Inc. FY 2021-2022

**2,545**  
Community Events  
focusing on **mental  
health awareness  
and education**

## Counseling Clients

AIHCS	505
CIHCS	586
O&E	334
<b>TOTAL</b>	<b>1,425</b>

## Counseling/Therapy Sessions

AIHCS	1,271
CIHCS	697
O&E	2,004
<b>TOTAL</b>	<b>3,972</b>

## Community Training/ Educational Skills & Classes

School Readiness	254
O&E	223
<b>TOTAL</b>	<b>477</b>

## Delivered Goods

Basic Needs	8,064
-------------	-------

## Events

O&E	2,191
School Readiness	354
<b>TOTAL</b>	<b>2,545</b>

## Case Management/ Parenting Visits (In-person/virtual)

Infant-Toddler	2,128
HVP	1,394
CIHCS	999
AIHCS	668
School Readiness	1,831
O&E	2,160
<b>TOTAL</b>	<b>9,180</b>

## Outreach Contacts

O&E Only	33,694 (goal was 25,000)
----------	--------------------------

## Socioeconomic Status (Low Income)

HVP	90%
Infant-Toddler	92%

**Delivered Goods  
through Basic Needs**  
(Beds, car seats, diapers,  
strollers, food, clothing)

**8,064**

**477**

**Community Training  
and Educational Skills  
Classes** conducted

**Outreach for mental  
health awareness**

**33,964**  
individuals



# 1,425

individuals counseled,  
representing 3,972 sessions  
through our Outreach &  
Engagement and crisis  
programs.

### Parents Served

Infant Toddler	569
HVP	233
CIHCS	879
School Readiness	531
Basic Needs	1,371
<b>TOTAL</b>	<b>3,032</b>

### Children Served

CAST	814
CIHCS	586
Infant-Toddler	379
HVP	155
Basic Needs	914
School Readiness	354
<b>TOTAL</b>	<b>3,202</b>

### Connected Care

Number of Scheduled Calls	884
Number of Unscheduled Calls	188
Number of Scheduled Visits (all types)	50

### Referral Types:

Basic Needs	26
Counseling	28
Education	5
Employment	7
Financial	21
Housing	12
Legal	9
Medical (Health/Insurance)	27
Peer Support	19
Substance Use	16
Transportation	5

### Parents Served

# 3,032

### Children Served

# 3,202

# 1,122

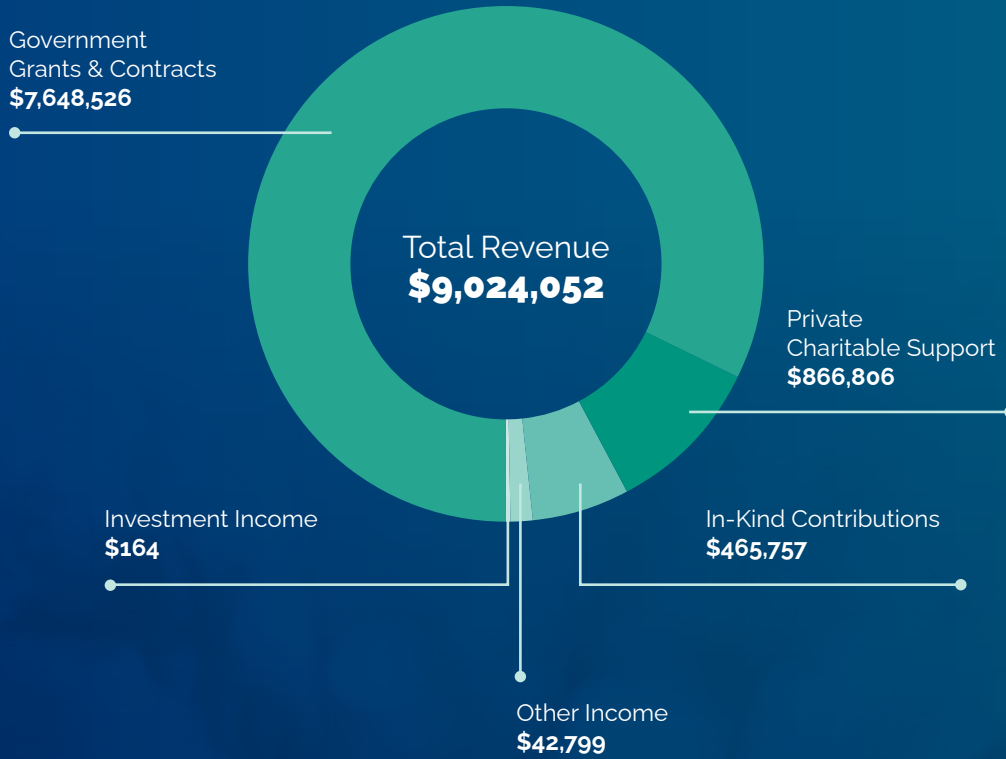
Visits/Calls  
with 175 service  
referrals

# 9,180

Case Management/  
Parenting virtual/  
in-person visits

# Financials

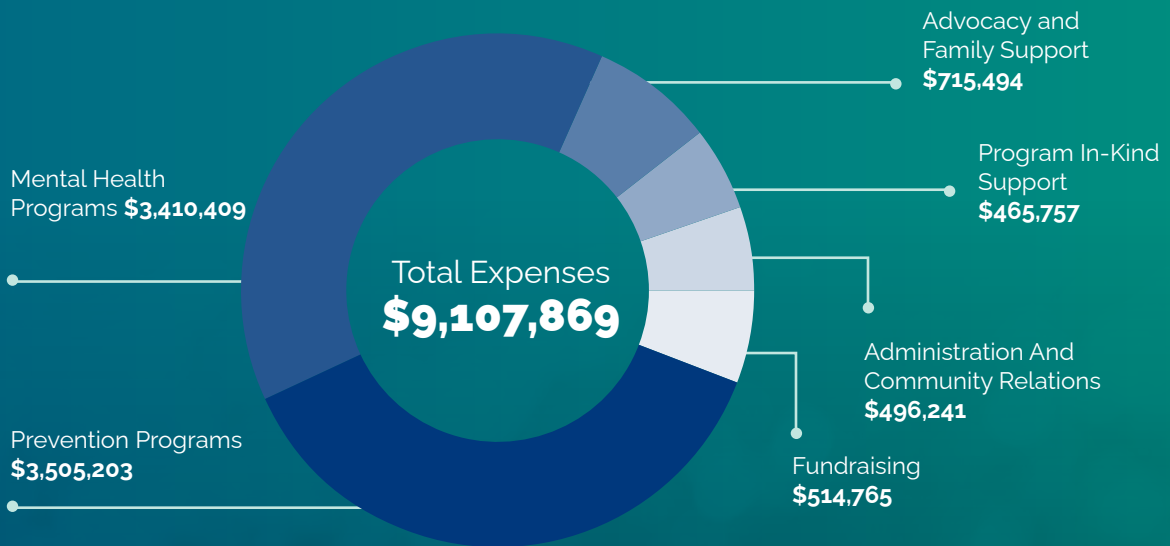
The Priority Center, Ending the Generational Cycle of Trauma, Inc. FY 2021-2022



## Program Support

Government Grants & Contracts	\$7,648,526
Private Charitable Support	\$866,806
In-Kind Contributions	\$465,757
<b>Total Program Support</b>	<b>\$8,981,089</b>
Other Revenue	
Other Income	\$42,799
Investment Income	\$164
Total Other Revenue	\$42,963
<b>Total Revenue</b>	<b>\$9,024,052</b>





### Expenses

Program And Services	
Mental Health	\$3,410,409
Prevention	\$3,505,203
Advocacy And Family Support	\$715,494
Program In-Kind Support	\$465,757
<b>Total Program And Services Expenses</b>	<b>\$8,096,863</b>

### Support Services

Administration And Community Relations	\$496,241
Fundraising	\$514,765
<b>Total Support Services</b>	<b>\$1,011,006</b>
<b>Total Expenses</b>	<b>\$9,107,869</b>
Change In Net Assets	(\$83,817)

# 2021-2022 Community Engagement

## Ready, Set, Learn! (July/Aug)

The Priority Center partnered with sponsors ABC7, Karina's Backpack Project, Dreams for Schools, and Ingram Micro, for the Ready, Set, Learn! Back-to-School campaign. The campaign, which raised nearly \$8,000, helped to ensure Orange County children in need would have the necessary school supplies to help them succeed in the upcoming academic year.



## I'm Here for You (September)

During National Suicide Prevention Month, The Priority Center launched the "I'm Here for You" campaign which raised \$4,000 while creating awareness, promoting education, and providing helpful tips and resources. Focusing on "See Something, Say Something" – funds went directly to support our In-Home Crisis Stabilization programs that serve children and adults who are experiencing a mental health crisis. This three-week program aids with stabilizing the individual, their family, and connecting them to appropriate resources and support.



# Families Helping Families (December)

To bring some Christmas cheer, The Priority Center's annual holiday gift drive brought joy – and gifts – to struggling families in Orange County. Santa was on hand with his Christmas motorcycle and sleigh as 275 families received gifts from their wish lists. Staff, board members, and volunteers joined in on the fun.



# Love Is (February)

The Priority Center raised just over \$20,000 as it joined seven other Orange County non-profit organizations on Wednesday, February 9, 2022, for the **Love Is** campaign. More than \$133,000 was raised in 24 hours to support healthy relationships for teens and young adults, exceeding the original goal of \$100,000.



# Donor List

## **Champions of Change** **\$25,000 +**

A Little Help Foundation Fund  
Anonymous  
Capital Group Companies  
Charitable Foundation  
Change A Life Foundation  
The Crean Family Foundation  
Croul Family Foundation  
DevTo Support Foundation  
Exchange Club of Newport  
Harbor  
George Hoag Family Foundation  
Green Foundation  
Anne MacPherson  
Milestone Risk Management  
& Insurance Services  
Catherine Sorensen  
Wright Ford Young & Co

## **Executive's Circle** **\$15,000 to \$24,999**

Exchange Club of Newport  
Harbor  
Gokal Law Group  
Milestone Risk Management  
& Insurance Services  
Catherine Sorensen

## **1983 Society** **\$10,000 to \$14,999**

ABC 7  
American Business Bank  
Athena Wong  
David and Susan Crockett  
Dhont Family Foundation  
Don and Justine Kennedy  
Rite Aid Foundation  
Warne Family Charitable  
Foundation

## **Blue Ribbon** **\$5,000 to \$9,999**

A Little Help Foundation  
ALTA Good Deeds Foundation  
American West Restaurant Group,  
LLC  
Ameriprise Financial Services, Inc.  
Amundi Pioneer Asset  
Management USA  
Aristotle Capital Management  
LLC  
Meridith Baer  
Banc of California  
Branded Group  
Marcia Chow  
Debashis and Laurel Chowdhury  
Classic Paving Services, Inc.  
Diamond Hill Capital  
Management  
Doreen D. Marshall Fund  
for Youth  
Edwards Lifesciences Foundation  
Esplanade Builders, Inc.  
First American Title Company  
Lisa Fujimoto  
Sara Garske  
Grace Helen Spearman  
Charitable Foundation  
Hanzel Construction  
Haskell & White LLP  
In-N-Out Burger  
Insurance Industry Charitable  
Foundation  
Kappa Delta Alumnae of OC  
Keller Williams Realty  
LPA Design Studios  
Madison Foundation for Families  
MUFG Union Bank Foundation  
One Digital  
Pacific Premier Bank  
Pacific Western Bank  
Urvashi Patel

Marc and Marianne Reich  
Roosters Foundation  
of Orange County  
Madison and Mary Spach  
Takeya USA  
Tarsadia Foundation  
The Barry L. Hoeven Charitable  
Trust  
The Ugalde Family Charitable  
Foundation  
Wal-Mart  
Jeremy Webb  
William Blair & Company  
William Ross Family Foundation  
J. Scott Young

## **Partners of Hope** **\$2,500 to \$4,999**

1st Century Bank CA  
Ankura Irvine  
Cal Coast Commercial Flooring  
City National Bank  
Anna-Marie Claassen  
Dom Curcio  
Vanessa Dixon  
Corey Fox  
Freddie Georges Production  
Group  
Dani Gold  
GPS Painting  
Howard Building Corporation  
Interior Electric, Inc.  
Julie Laughton Design Builds  
Sinan Kanatzis  
MicroVention, Inc.  
Teri Noble  
Pivot Interiors, Inc  
Alexander Ramos  
Colleen Rogers  
Anne-Marie Schiefer  
Benel Se-Liban



John Stephens  
Sundt Foundation  
Arthur and Sheila Swicker  
Teichert Foundation  
Wescombe Family Foundation  
Alyson Yarberry

**Priority Circle  
\$1,000 to \$2,499**

ACI Painting  
Alera Group  
Dan and Lindsay Almquist  
American Honda Finance Corporation  
Anaheim Community Foundation  
Andersen Plumbing  
Britton Arey  
Kristi Beard  
Elena Byrne  
Kristin Byrnes  
Cal IT Group  
Mark Carlin  
Scott Carroll  
CBE Office Solutions  
Daniel and Elizabeth Chang  
Control Air Enterprises LLC  
Cue Industries LLC  
Mikelle Daily  
Davison & Moore  
Sara Dixon  
Mike Etheridge  
Rich Flanagan  
Fletcher Jones Motorcars Management West  
Josh Foley  
James Freeman  
Frontstream  
Paul and Kristin Godby  
Katrina Goldberg  
Harbour Vest Partners

John and Erin Hoefer  
Drew Hoeven  
Jeff Hyman  
Ed and Laura Inal  
Penny Jo  
Karma Karma  
Jennifer Kim Zeller  
LANCAB, Inc.  
Shelly and Greg Lawson  
Lawyers Title  
Lazard Asset Management LLC  
Jason Martinez  
William Messenger Jr.  
Meldie Moore  
Lauren Murphy  
Lourdes Nark  
Nazzareno Electric  
New Century Door, Inc.  
Nuveen Investments  
Pathway Capital Management  
George and Nancy Ponce  
Poppy Bank  
Power Crunch  
Evelyn Ramirez-Schultz  
Brian Reed  
Reflex Networking  
Tom Roddel  
Jim Rushton  
Sage Goddess  
Linda Sarabia  
Brian Schuler  
Sharpe Interior Systems, Inc.  
Chad Sidles  
Cheri and Rick Smetanka  
Theresa and Curtis Steinhaus  
Emily Sukman  
Richard and Jody Swinney  
The Benevity Community Impact Fund  
Rowena Treitler

Kimberly Valley  
Kelly Vlahakis-Hanks  
Wells Fargo  
Liz Williams  
Forouzan Yavari  
Varooge and Brigett Yerganian

**Friends of the Children  
Up to \$999**

Karin Adams  
Paolo Alcantara  
Aaron Altman  
AmazonSmile Foundation  
Heather Aminian  
Lorraine Amor  
Anonymous  
Roger and Kari Armstrong  
Robert Asen  
Kristy Bailey  
Noel Baker  
Abby Banerjee  
Bank of America  
Bonnie and William Barrington  
Marisa Bavand  
Lawrence Beck  
John Benedict  
Tom Bergerson  
Stu Betti  
Blackbaud Giving Fund  
Jessica and Jessica Blair  
Stuart Blair  
Byron Blanco  
Lindsay Bosshart  
Amy and James Bourne  
John Boyle  
Meghan Boyle  
Gary Bridge  
Bob Brown  
Rob Buller

## Donor List (continued)

Michelle Campero  
Martin Canales  
Capital Group Companies, Inc.  
Susan Carroll  
Chip Carter  
Scott Cernigoj  
Bryce Chalmers  
Charities Aid Foundation of America  
Amy Chicoine  
Mark and Amy Clews  
Chris Cote  
R John Covert  
Michael DeArmey  
Chris Della Sala  
Nan Diesen-Ng  
Bob Dion  
Keith & Jennifer Dolnick  
Helen Dos Santos  
Jaclyn Duarte  
Sheila Dufresne  
James Eaton  
Lori Escobosa  
Sean Evans  
Erika Fink  
First Christian Church of Orange  
Timothy Fisher  
Melissa Flagg  
Jennifer Friedland  
Kathryn Fukuda Amooi  
Brad Garner  
Michael Genest  
Michael Gertner  
Jeff Gibson  
Jennifer Giffen  
Gelisa Gonzaga  
Laura Greenia  
Andrew Griffiths  
Leyla Hanjan  
Hallie Hannah  
Patrice Harmon  
Jessica Helal  
Laura Henkels  
Stan Henry  
Kenneth Hernandez  
Hexagon Agility

Michelle Highberg  
Aric Hill  
Rebecca Holden  
Cat Holly  
Adam Hoover  
Tina Hopka  
Aimee Hostetter  
Bryan Howard  
Luke Hudson  
Ann Marie Hull  
Carolyn Hwang  
Robert Istwan  
Beth Jaeger  
Paul Jenkins  
Aaron Jett  
Nithin Jilla  
Darrell Johnson  
Treg Julander  
Annette Kennedy  
Victoria Kinney  
Lawrence Klayman  
Dan Klein  
Kroger  
Michael Kurland  
Hogiadi Kurniawan  
and Julisa Wiharso  
Andi Kuryllo  
Shelby Kuryllo  
Joan Lane  
Petra Ledet  
Shelley Leith  
Gina Lesley  
Guy Levy  
Janna Lim  
Fermin and Nora Llaguno  
Lori Logan  
Ann Long  
Randall J Long  
Michael C. Lovullo  
Erika Ly  
Rossella Mazzucchelli  
Kevin McCarthy  
Thomas McManus  
David McPhie  
Maria Mejia  
Robert Meyer

Casolari Michael  
Pat Midkiff  
Jon and Suzanne Miller  
Ashley Model  
Michael Moore  
Peter Moroh  
Kaz Mulcahy  
Toni Jean Munoz  
Laurel Murray  
Alex Musetti  
Mike Myers  
National Christian  
Foundation of California  
Rick Nazzareno  
Mario Negrete  
Jamie Nelson  
Karen Nelson  
Network for Good  
Vanessa Niven  
Sharon T O'Brien  
Jeff Owens  
Erika Pedersen  
Laura Petersen  
David and Emily Plourde  
Powerstone Property  
Management  
Bernadette Pulone  
Linda Querubin  
Dawn Railey  
Rainbow Sandals  
Abba Ramsaran  
Christine Rankin  
Jamie Reidy  
Jennifer Reiss  
David Repper  
Kevin Ritchie  
Phyllis Ann Roberts  
Elise Robins  
Savers / TVI Inc.  
Sarah Schmidt  
Karen Schoenbaum  
Seeley Brothers  
Christopher Selzer  
Jim Serpa  
Shadi Shaffer  
Jeffrey and Diane Shepard



Almas Shewa  
 Edward Shin  
 Lori Simpson  
 Scott Singletary  
 Kirk Smith  
 Christina Smolskis  
 Ariana Spero  
 Barrett Sprowl  
 Jane Stavropoulos  
 Dustin Steeve  
 Milan Steijn  
 Phillip Stump  
 Timothy Suhling  
 Katie Sullivan  
 Gail Swindler  
 Niky Syrengelas  
 Craig Takata  
 Karen Tallichet  
 Gail Taylor  
 Lawrence Telles  
 The Moore Law Group  
 Allyson Thompson  
 Jeff Tibbets  
 Vinny Tomas  
 Bill Tornquist  
 Brian Trumbo

Tuulbelt, Inc.  
 TVI Inc.  
 United Way of Greater Philadelphia and Southern New Jersey  
 Isabel Valdivia  
 Louise Valencia  
 Verizon Foundation/  
 Cybergrants  
 Andreas Waldukat  
 Harry Wallace  
 Wendy Warren  
 Gregory Washer  
 Jennifer Wiegman  
 Mike Wilson  
 Hilary Worchell  
 Terri Wright  
 William Wyand  
 Laura Zolnekoff



## Pillars of Priority

The Priority Center's Pillars of Priority campaign seeks sponsors to support our critical work by acquiring the naming rights to one of several rooms at our headquarters in Santa Ana. Each room is designated with the sponsor's chosen name and displayed on a plaque at its entrance. Sponsors are also recognized as Pillars of Priority Donors on a donor wall at our office, The Priority Center's website, Impact Report, and marketing materials.

### William Ross Foundation

We are excited about this new partnership and thankful for individuals like William and Elaine Ross, who believe in our work and make it possible to change the lives of those who need it most in the Orange County community. The mission of the William Ross Family Foundation is to build a robust and healthy community by supporting local nonprofit organizations that impact children.

*The Priority Center's 2021-2022 Impact Report gratefully acknowledges donors who made gifts between July 1, 2021-June 30, 2022. We have made every effort to spell names correctly and print accurate information. If there are errors or omissions, we apologize and ask that you contact us ([info@theprioritycenter.org](mailto:info@theprioritycenter.org)) so they may be corrected.*

## Pillars of Priority

Thank you to the following donors who have contributed towards naming a room or space at The Priority Center office in Santa Ana.

Debashis and Laurel Chowdhury  
 Crean Family Foundation  
 Exchange Club of Newport Harbor  
 Lisa Fujimoto  
 Hughes Marino, Inc.  
 Joe MacPherson Foundation, Inc.  
 Colleen Rogers  
 Catherine Sorensen

## Priority Giving Club

A huge thank you to our monthly recurring donors who stay true to our mission all year long.

Tuulbelt, Inc.  
 Paolo Alcantara  
 Melissa Flagg  
 Edward Shin  
 Victoria Kinney  
 Colleen Rogers

# Partnerships

211 OC	Fieldstone Leadership	Olive Crest
AOT	First 5 Orange County	OMID
APAIT	Flying Geese Quilters Guild	One OC
All 4 Kids	Fullerton USD	Orange County Crisis Assessment Team
Be Well	Garden Grove Collaborative	Orange Senior Center
Beach Cities Quilters Guild	Help Me Grow?	Orange County Veterans & Military Families Collaborative (OCVMFC)
Buchanan Street Partners	Hoag Hospital	Orange County Scroll Saw Association
Buena Park Collaborative	Human Options	Orange County Wellness Centers
Cal Optima	Illumination Foundation	Orange County Woodworkers Association
Capistrano USD	In-N-Out Burger Foundation	Pacificore Construction, Inc
Casa Teresa	In Memory of Frankie Fukuda	Pathways
Centralia USD	Jamboree Housing	Patricia Poss Bridge Club Friends
Child Guidance Center	Karina's Backpack Project	Petro Diamond
Children's Bureau	Laguna Playhouse	Phoenix House
CHIRLA	Lestonnac Free Clinic	Pretend City
CHOC	Magnolia School	Project Access
City of Santa Ana	Make-A-Wish Foundation	Resource Network
Clinic in the Park	Mary's Path	Roosters Foundation
Collaboration to Assist Motel Families	Mental Health America OC (MHAOC)	Saddleback USD
Connect OC	Mind OC	Santa Ana USD
Council on Aging	Mira Loma Family Resource Center	Second Harvest Food Bank
County of Orange Social Services Agency (SSA)	Mix Academy	Silver Tree House
CSU Costa Mesa/College Hospital	MOMS OC	Standup4Kids
CSU Santa Ana	NAMI	The Diaper Bank
Delta Kappa Gamma	National Charity League	The Raise Foundation
Didi Hirsch	Nicholas Academic Centers (NAC)	Tierney Center
Discovery Cube	Norooz Clinic	Tustin Family and Youth Center
Easter Seals	North Cities Quilters Guild	UCI
Eastside Church	Oak View School District	Waymakers
Exchange Club of Newport Harbor	OC Health Care Agency	Western Youth Services
Exodus	OC Links	X Y Z Telephone Pioneers
Families Forward	OC Neighborhood	
FDP Charitable Foundations	OC Regional Center	
	OCAPICA	



# Board of Directors



**Roger Armstrong** \*Chair

Entrepreneur



**Debashis Chowdhury**

President, Canterbury Consulting



**Mark Clews**

Senior Managing Director, Ankura



**Susan Crockett** \*Co-Chair

Patent Attorney/Owner,  
Crockett & Crockett



**Vanessa Dixon**

Professor of Sociology and Criminal  
Justice, California State University,  
Long Beach



**Paul Godby**

Vice President, The Capital Group  
Companies



**Abbas Gokal**

Attorney at Law, Gokal Law Offices



**Ed Inal**

Chief Operating Officer  
Aivita Biomedical



**Beth Jaeger**

Real Estate Broker/Philanthropist



**Donald Kennedy**

Senior Vice President,  
First American Title Company



**Hogiadi Kurniawan** \*Chair Emeritus

Audit Senior Manager,  
Haskell & White LLP



**Thomas Manakides**

Partner, Gibson, Dunn & Crutcher LLP



**Alex Musetti**

Vice President, Hughes Marino, Inc.



**Marc Reich**

Founder, Managing Partner, Reich  
Radcliffe & Hoover LLP



**Colleen Rogers**

Principal Operator, Keller Williams



**Jeffrey Shepard**

Senior Vice President,  
Hughes Marino, Inc.



**Catherine Sorensen** \*Secretary

Philanthropist and Community Volunteer



**Madison Spach** \*Treasurer

Partner, Spach, Capaldi &  
Waggaman, LLP



**Richard Swinney**

Attorney



**Kimberly Valley**

Vice President Compliance Officer,  
City National Bank



**Gregory Washer**

Entrepreneur



**Athena Wong**

Vice President, Human Resources,  
Agility Fuel Solutions



**Alyson Yarberry**

Founder/CEO, Modera Inc.



**The  
Priority  
Center**

Ending the Generational  
Cycle of Trauma

**Impact Report  
2021-2022**

1940 E. Deere Avenue, Suite 100,  
Santa Ana CA 92705

Phone 714.543.4333

Fax 714.543.4398

**ThePriorityCenter.org**

